

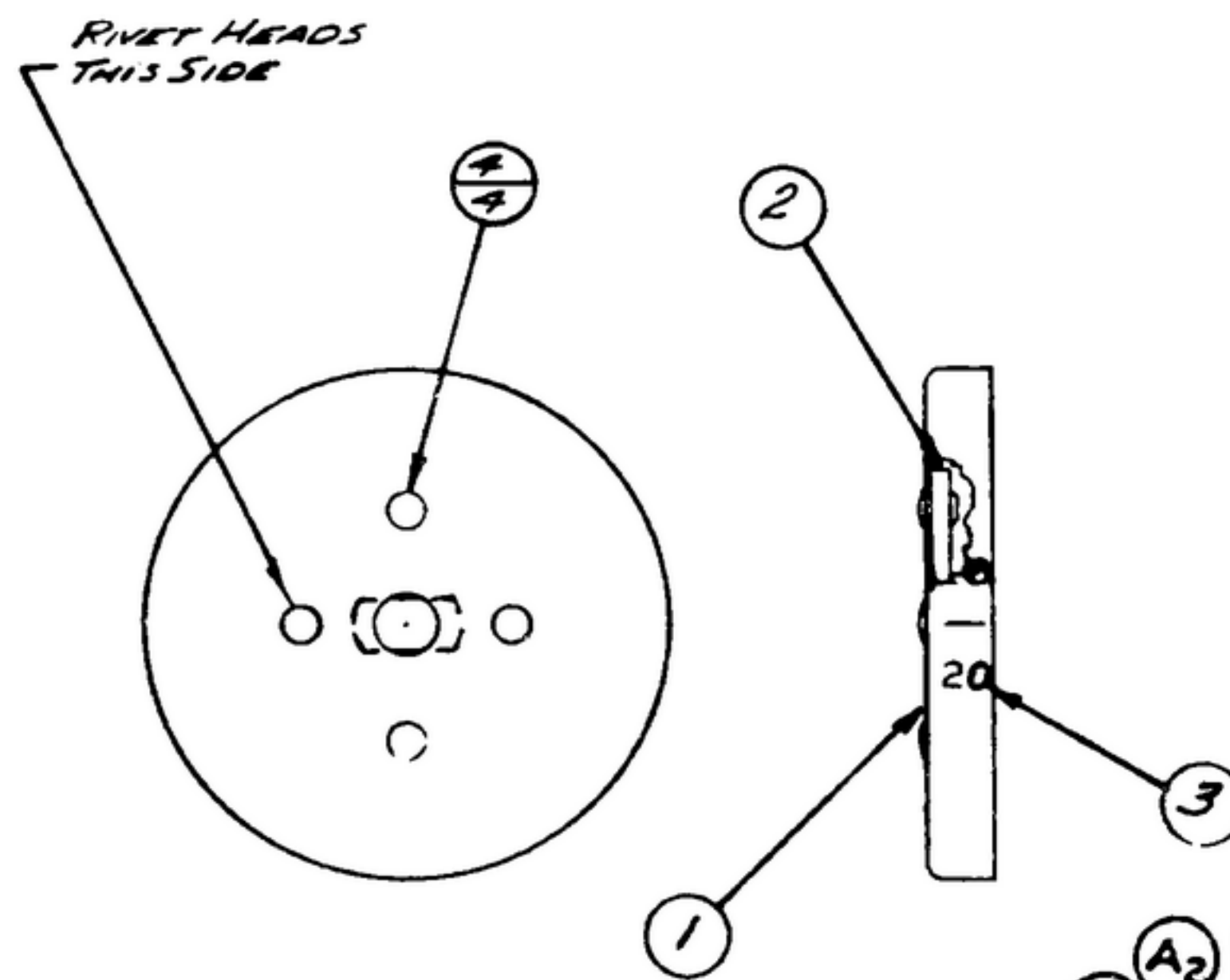
NOTES: WHEN GOVERNMENT SPECIFICATIONS, OR OTHER DATA ARE USED FOR ANY PROCESS OTHER THAN AS SPECIFIED IN THIS DRAWING, THE USER'S OFFICE DEPARTMENT THROUGH WHICH THE GOVERNMENT USES ANY CALCULATION, MEASUREMENT, AND THE FACT THAT THE GOVERNMENT HAS BEEN ADVISED, THROUGH, OR IN ANY WAY SUPPLIED BY THE USER'S OFFICE, SPECIFICATIONS, OR OTHER DATA IS NOT TO BE REGARDED AS A WARRANTY OR GUARANTEE AS TO ANY MANNER IN WHICH THE GOVERNMENT USES ANY CALCULATION, MEASUREMENT, OR OTHER DATA IN CONNECTION WITH ANY PROCESS OTHER THAN AS SPECIFIED IN THIS DRAWING.

THIS DRAWING HAS BEEN PREPARED BY THE CONTRACTOR AND MAY BE MODIFIED AND USED IN CONNECTION WITH ANY GOVERNMENT PROCESS OTHER THAN AS SPECIFIED IN THIS DRAWING.

\* FOR INFORMATION ONLY. CONTRACTOR MAY AT HIS OPTION DEVIATE FROM THESE PROCESS DETAILS.

REVISIONS			
SYM	DESCRIPTION	DATE	APPROVAL
A <sub>2</sub>	A <sub>1</sub> -NOTE 1 REFERENCED A COMMERCIAL TYPE CEMENT, A <sub>2</sub> -REMOVED ITEM 5(CEMENT)	19 OCT. 59	42428-PC-59-AI-51 REV'D
B <sub>1</sub>	B <sub>1</sub> -ITEM 4, REQ'D 4 SM-B-283266-4 WAS SM-B-283266-2.	15 JUNE 60	42428-PC-59 REV'D FILE
C <sub>1</sub>	C <sub>1</sub> -SM-B-283266-2 WAS SM-B-283266-4	15 JUNE 60	42428-PC-59 REV'D FILE

<del>SWE APPROVAL</del>	
SYM	PR10042-7
B <sub>1</sub>	CA 84804



- NOTES: (A<sub>1</sub>)
1. APPLY LABEL (3) TO DRUM (1) IN POSITION, AS SPECIFIED IN PAR 3.9.1 OF SPEC MIL-D-8635.
  2. ROLL HUB (2) TO DRUM (1) USING RIVETS (4).
  3. IN ALL SPLIT BALLOONS TOP FIGURE IS MATERIAL LIST ITEM INDICATOR & BOTTOM FIGURE IS QUANTITY.

FIG No. 15000209

(A<sub>2</sub>)  
(B<sub>1</sub>)  
(C<sub>1</sub>)

ROLLING PART NO.	ITEM	QTY	PART NO.	DESCRIPTION	MATL.	MATL. SPEC.	NOTES
<del>559 0443 002</del>	<del>4</del>	<del>4</del>	<del>SM-B-283266-2</del>	<del>RIVET-TUBULAR</del>			
<del>559 0188 00</del>	<del>3</del>	<del>1</del>	<del>SM-B-249240</del>	<del>LABEL-TRANSFER</del>			
<del>558 0875 002</del>	<del>2</del>	<del>1</del>	<del>SM-B-249025</del>	<del>HUB-INDICATOR</del>			
<del>558 0374 002</del>	<del>1</del>	<del>1</del>	<del>SM-B-249024</del>	<del>DRUM-INDICATOR</del>			

LIST OF MATERIAL - COLLING PART NO. 558 0384 002

558-0384-002	1	SM-D-249007	SC-DL-248775
COLLING NO.	QTY	NEXT ASSY	USED ON
APPLICATION			

DRAWN HENRY  
CHECKED REM  
APPROVED

UNLESS OTHERWISE SPECIFIED:  
DECIMAL DIMENSIONS INCLUDING HOLE SIZES MAY VARY ±.005  
FRACTIONAL DIMENSIONS INCLUDING HOLE SIZES MAY VARY ±.01  
MACHINED ANGLES MAY VARY ±.1°  
SHEARED ANGLES MAY VARY ±.50°  
BROKEN ANGLES MAY VARY ±.1°  
ECCENTRICITY BETWEEN ANY DIAMETERS ON THE SAME CENTERLINE SHALL NOT EXCEED .010 TOTAL INDICATOR READING  
ALL DIMENSIONS ARE FINISH DIMENSIONS INCLUDING APPLIED FINISH AND ARE GIVEN IN INCHES.

COLLING PART NO. 14214-PH 51-93  
SIGNAL CORPS  
REVIEWED PME  
APPROVED HLY PME  
DATE 15 Dec 55 SCALE 1/1

INDICATOR ASSY-XTAL OSC.

DEPARTMENT OF THE ARMY  
SIGNAL CORPS ENGINEERING LABORATORIES  
FORT MONMOUTH NEW JERSEY  
SM-B-249034